

Drive Unit

LIMISERVO XC-K series

LIMISERVO XC-K Series : Induction type AC Servo Motor and Control

Box

Direct motor for lockstitch machine

* Functions / Performance

*Accurate needle stop function

Cycle times can be shortened with the popular and outstanding stop characteristics.

* Operability

*Detachable display unit

The detachable display unit makes it easy to confirm the parameters.

*Simplified parameter setting

Bothersome operations for setting and calling parameters are eliminated with the address designation method.

*Parameter change and display function

Changes to default parameters are indicated with a flickering "dot" display.

*Detachable lever unit

The lever unit can be detached from the control box, allowing the installation position to be changed.

* Compatibility

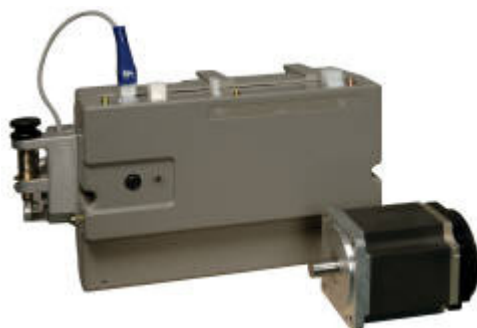
*Cables compatible with F series

The XC-E500-Y control box, XC-FM-1, XC-FM-2 or LE-FA presser foot lifter, and XC-VCS-2 variable speed pedal can be used.

* Others

*Improved reliability

The new design provides higher vibration resistance and noise resistance compared to conventional models.



Type	Output	Power Supply		Rated speed	Maximum speed	Mass
		Number of phases	Voltage			
XL-K556-20	550W	Three phases	200 to 240V	4,000rpm	5,000rpm	2.8kg (Main unit)

Type	Output	Power supply		Function	Mass
		Number of phases	Voltage		
XC-KM-20-05	550W	Three phases	200 to 240V	Full functionality including auto thread trimming, presser foot lifting, fixed-stitch stitching, continuous stitching and backtacking. Equipped solenoid drive output can be customized by user.	3.5kg (Main unit)