

INDUSTRIAL SEWING MACHINES

PLK-G4030R/6030R Double-size rotary hook sewing machines



PLK-G4030R

PLK-G6030R

*Automation
Technology*
BY MITSUBISHI
ELECTRIC

Raise quality another rank

Features

[Supports cotton and thin materials]

1. Suitable for decorative stitching, such as leather materials for bags and automobile seats.
2. The full-rotation hook increases stitching stability and supports a wide range of applications.

Specifications

Item	Model	PLK-G4030R	PLK-G6030R
Sewing area (X x Y)		400 x 300mm	600 x 300mm
Stitching style		Single-needle lockstitch	
Hook		Double-size rotary hook	
Max. speed (*1)		Intermittent: 2,000rpm Continuous: 2,000rpm	
Feeding system		Intermittent or continuous (switchover method)	
Stitch length		0.1 to 20.0mm	
Max. stitches		20,000/pattern	
Max. patterns (*2)		900	
Enlargement / reduction function		10 to 200% for both X and Y axes (adjustable in 0.1% steps)	
Memory medium		USB flash memory (not included with sewing machine) (USB-connected FDD can also be connected)	
Work piece holder lift stroke		30mm	
Work piece holder lifter drive		Pneumatic	
Presser foot drive		Stepping motor	
Presser foot lift stroke		15mm	
Presser foot stroke		4 to 10mm	
Spindle motor		Mitsubishi Electric 750W direct servomotor	
Needle		DPX17 #18	
Operation panel		PLK-G-PAL-2	
Mass		430kg	450kg
Outline dimensions (W x D x H)		1,185 x 1,572 x 1,234mm	1,350 x 1,572 x 1,234mm
Power supply		200 to 240V single-phase or three-phase 110 to 120V and 380 to 415V are both compatible using optional power-supply unit	

*1 Based on Mitsubishi Electric measurement conditions. (The sewing speed may be limited due to settings, etc.)

*2 The maximum number of patterns may be limited due to the number of stitches in the stitching pattern, etc.

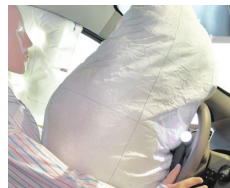
Applications



<Car seats>



<Door trim>



<Airbags>



<Bags>



Safety Precaution

To ensure safe and proper use of the products in this document, please make sure to read the relevant instruction manuals and technical notes before use.

Note: Be sure to confirm the details of the warranty when making a purchase.

MITSUBISHI ELECTRIC CORPORATION

FACTORY AUTOMATION SYSTEMS
Tokyo Building, 2-7-3 Marunouchi, Chiyoda-ku, Tokyo 100-8310, JAPAN
<http://www.mtco-web.co.jp/misin/english/index.html>